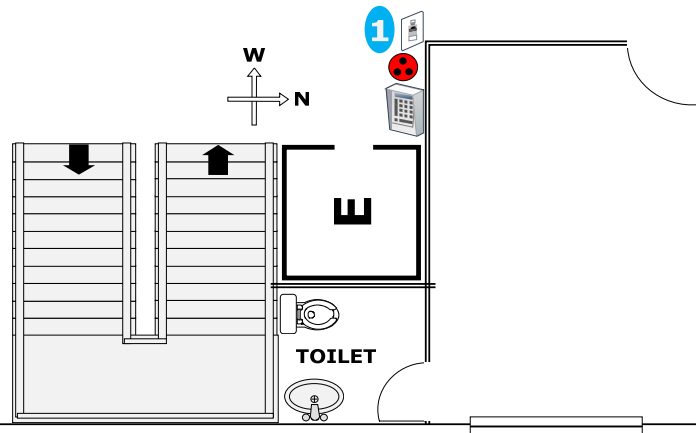


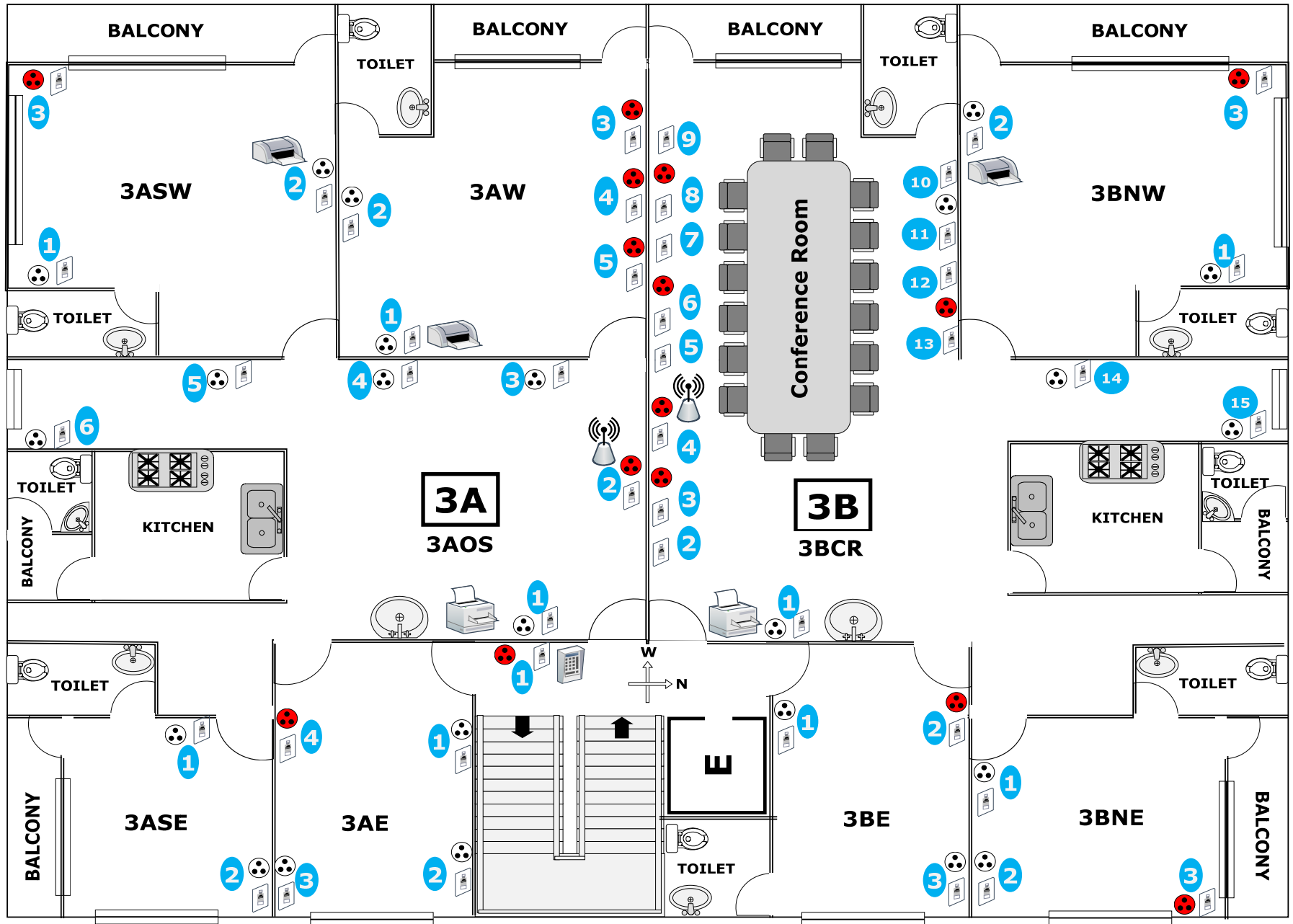
SDF New Office Ground Floor Network Layout- (Node 1 No.)

CAR PARKING

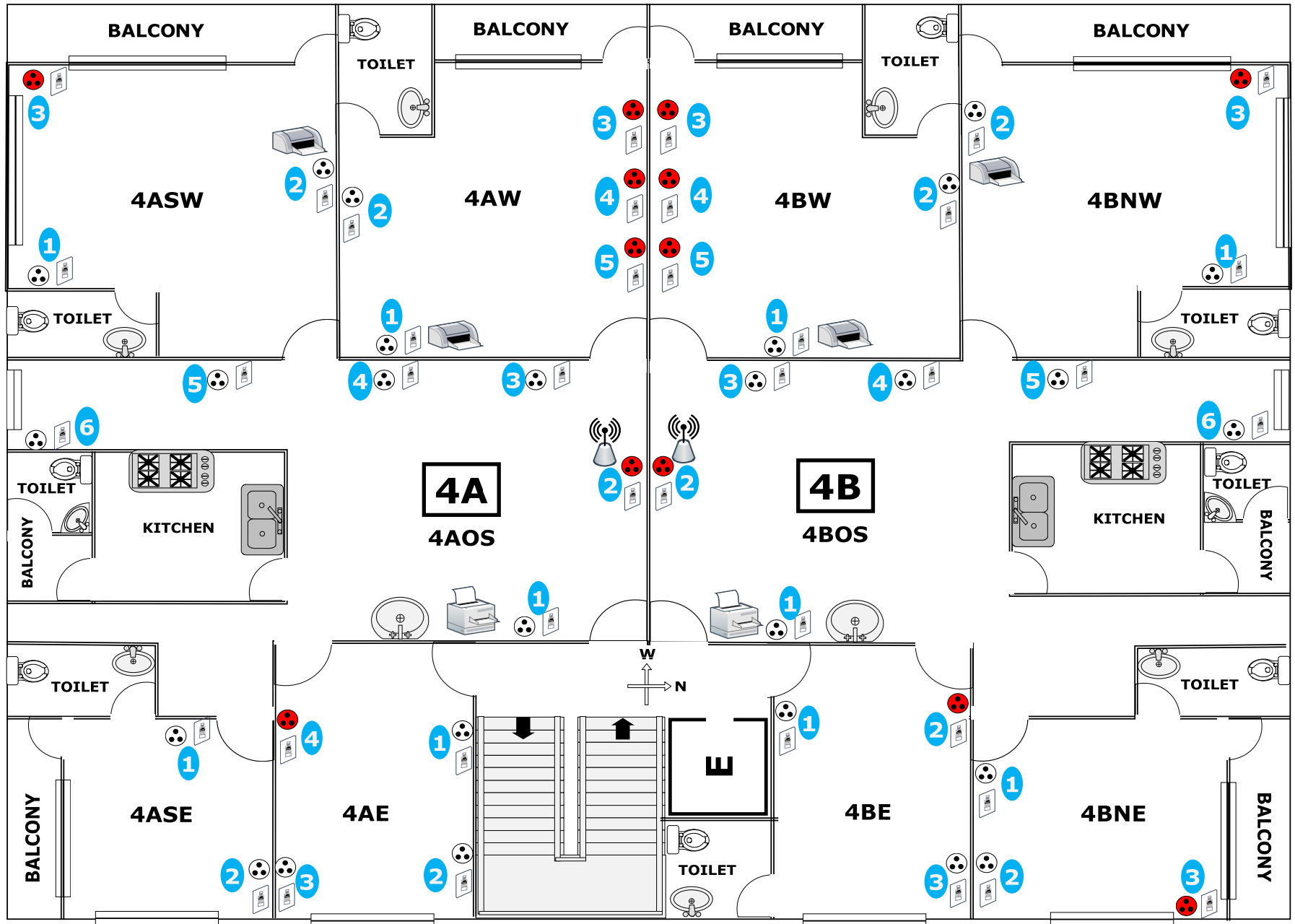
GF



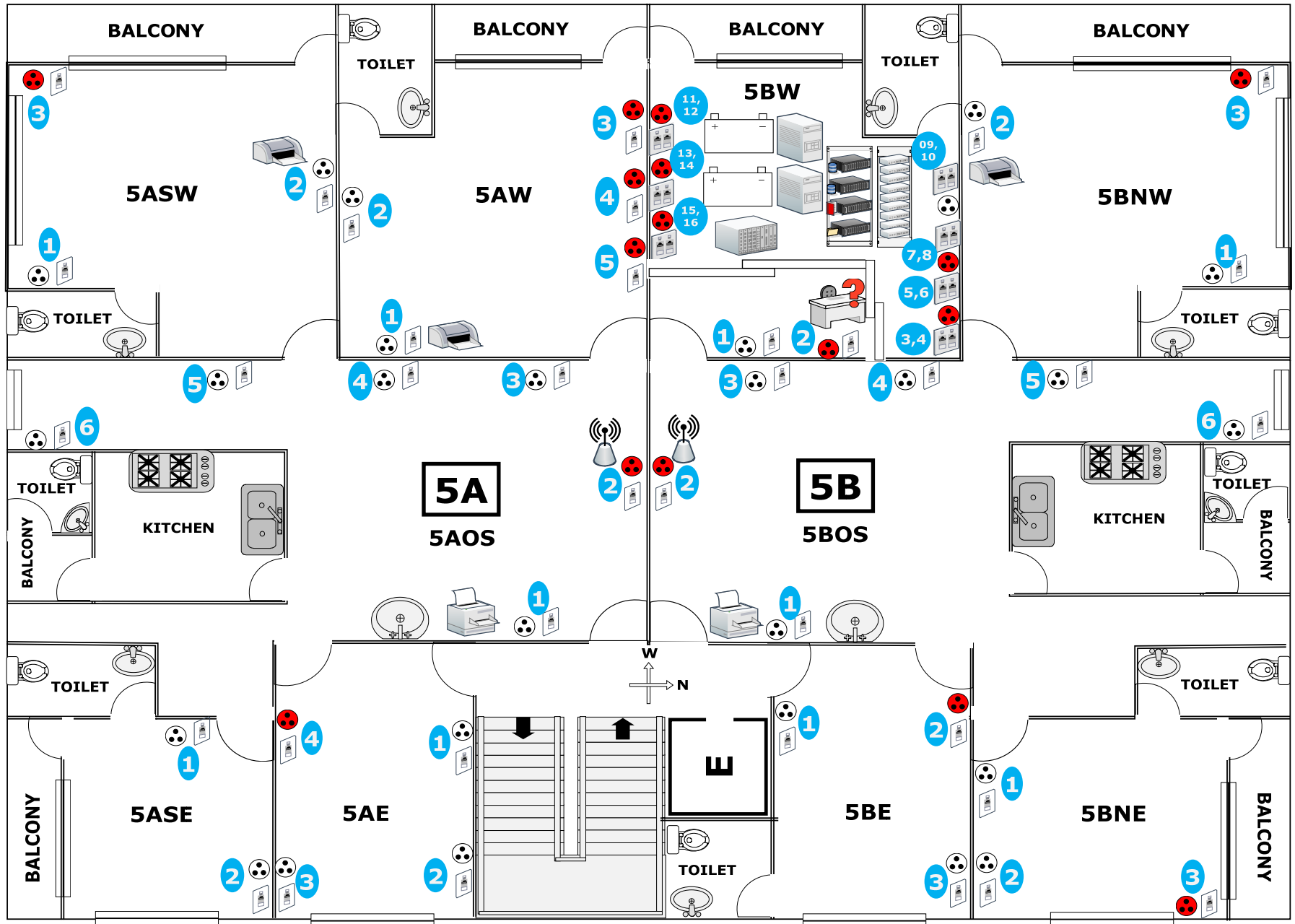
SDF New Office 3rd Floor Network Layout- (Nodes 45 Nos.)



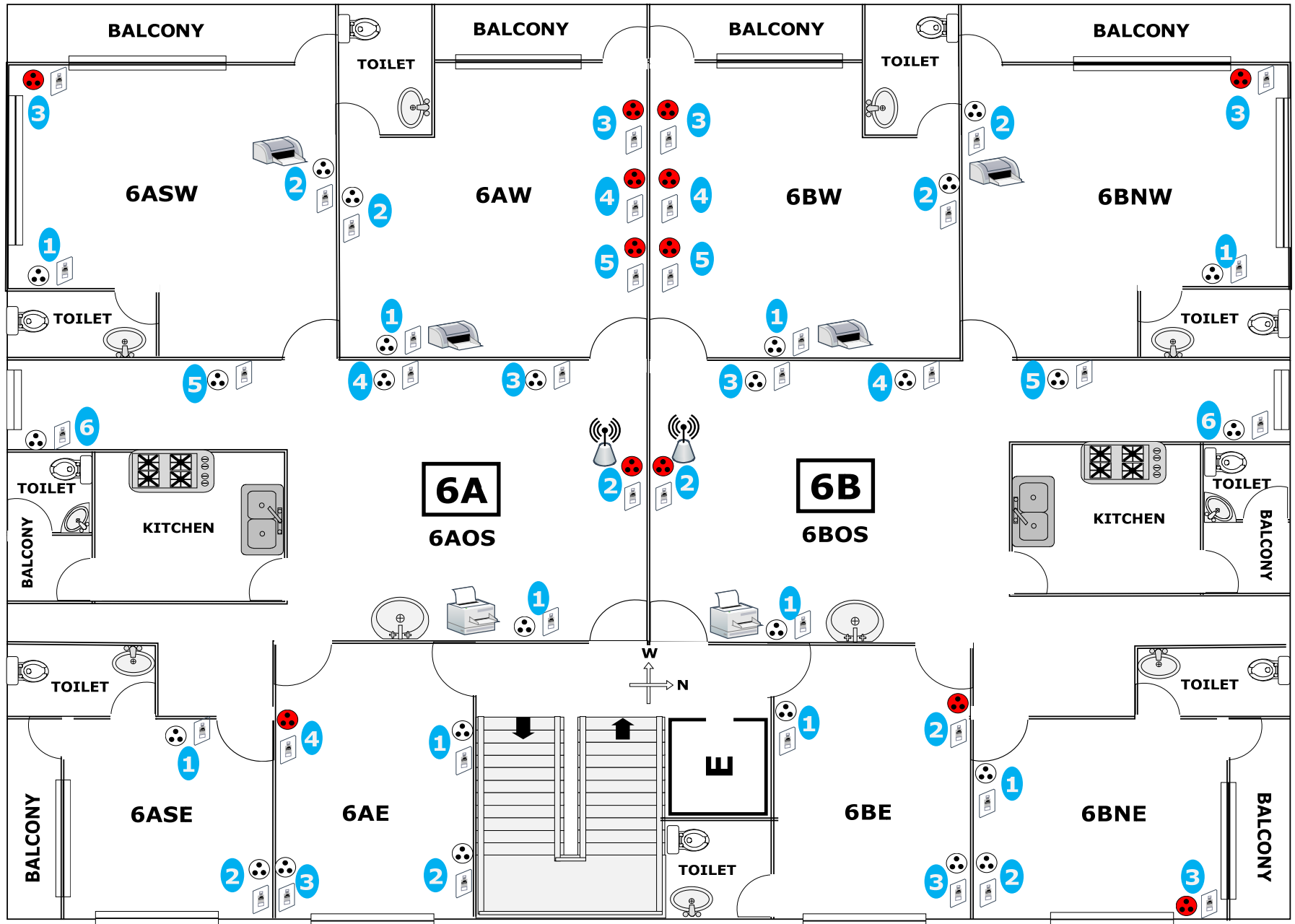
SDF New Office 4th Floor Network Layout- (Nodes 40 Nos.)



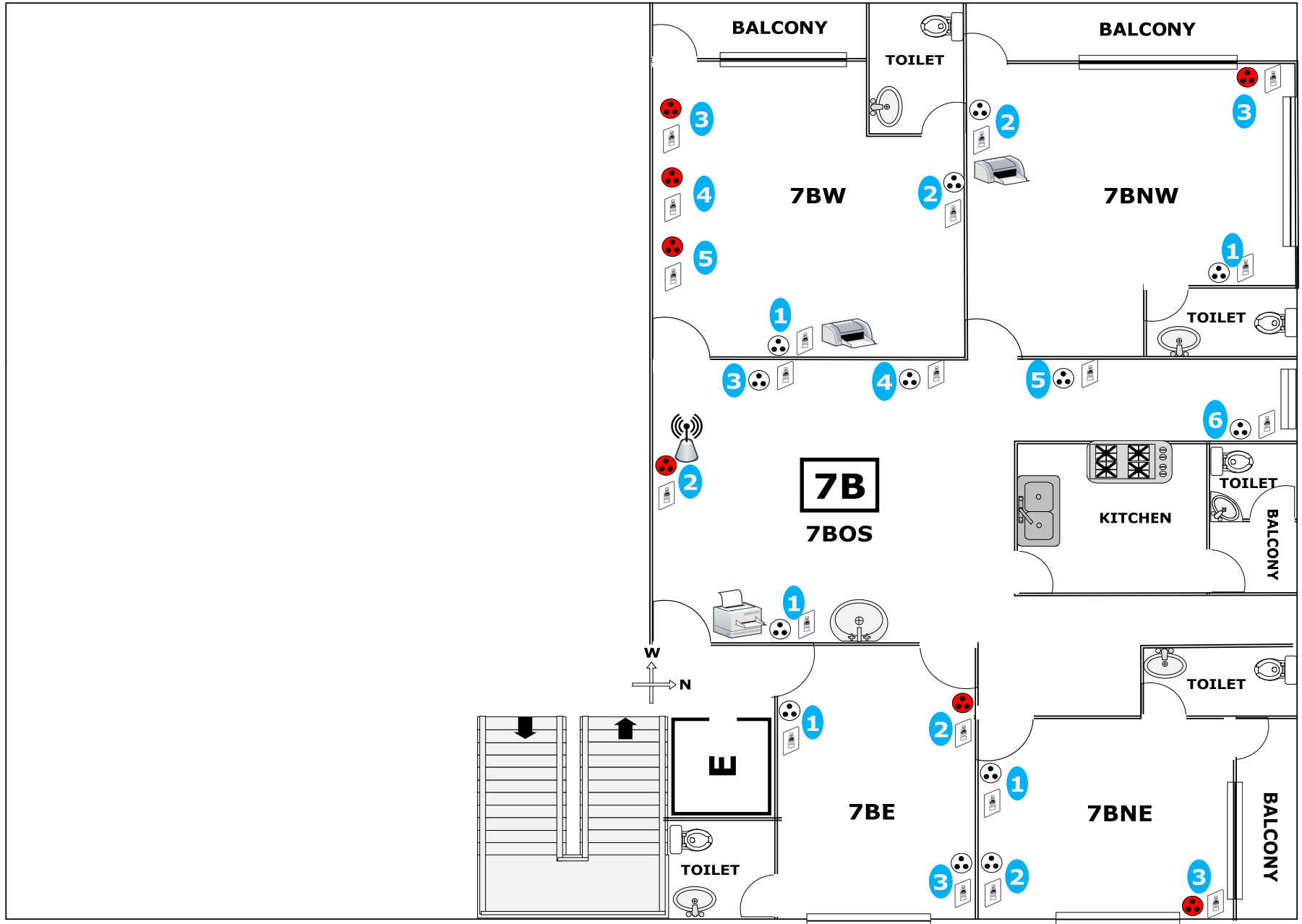
SDF New Office 5th Floor Network Layout- (Nodes 51 Nos.)



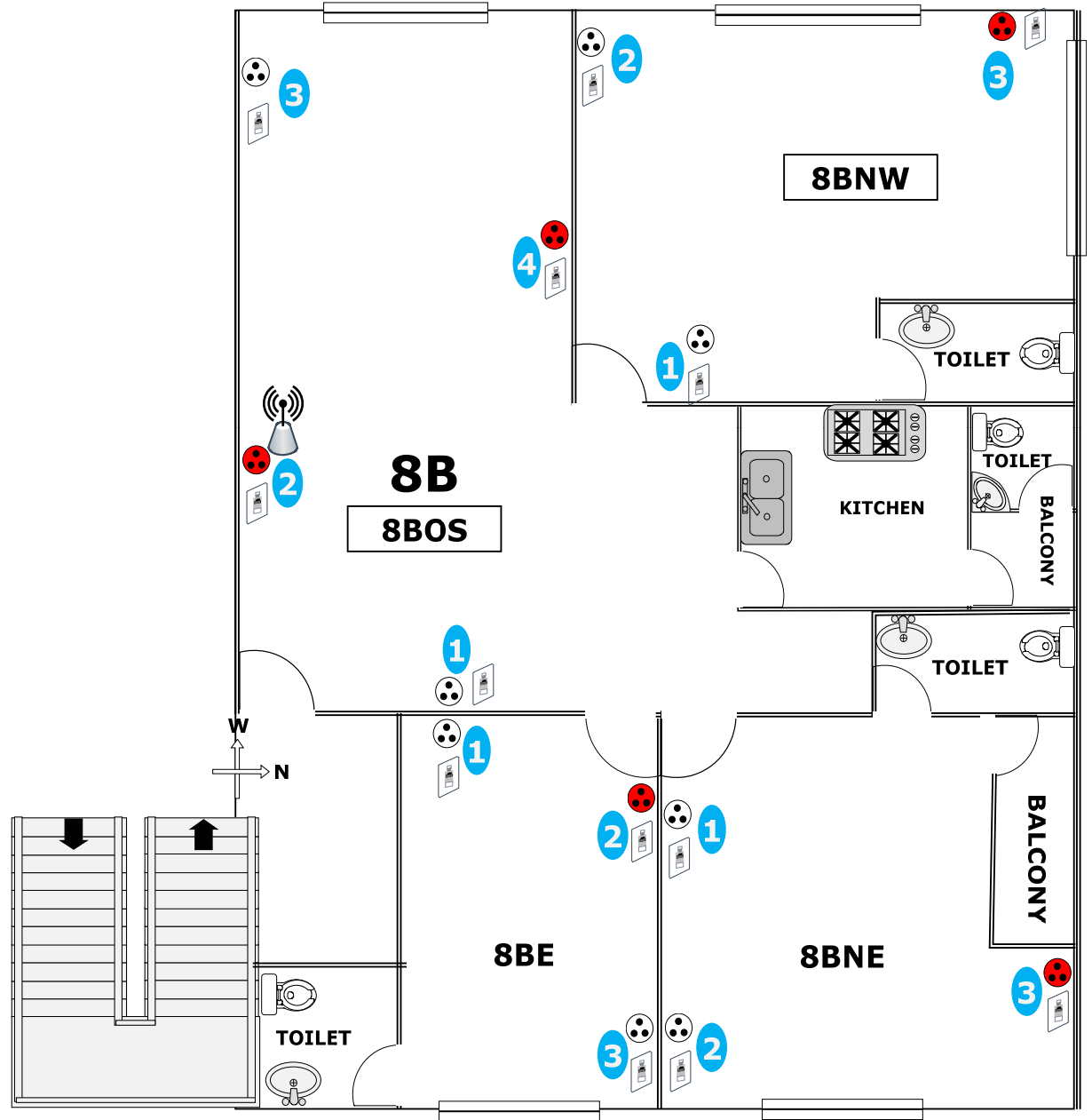
SDF New Office 6th Floor Network Layout- (Nodes 40 Nos.)

















SDF New Office 7th Floor Network Layout- (Nodes 20 Nos.)



SDF New Office 8th Floor Network Layout- (Nodes 13 Nos.)



Legends

-  - Single Modular Face Plate Network Node
-  - Double Modular Face Plate Network Node
-  - Existing Power Outlet
-  - Power Outlet Required
-  - Wireless Access Point / Router
-  - Switch Rack
-  - Server Rack
-  - Online UPS
-  - Online UPS Battery Bank
-  - Automated Backup System
-  - Heavy Duty Network Printer
-  - Desktop Printer
-  - Attendance Device
-  - IT Support Service Desk

Scope of Work

- Use ISO certified Branded UTP Cable Type: CAT 5e / 6
- Use Branded Best Quality PVC Channel & Box for wiring
- Number of Fully Functional Nodes to Install : 210 Nos.
- ISO certified Branded Single Face Plate with Modular: 196 Nos.
- ISO certified Branded Double Face Plate with Modular: 14 Nos.
- Dismantling and Reassembling of Server & Switch Racks
- Organized cable orientation of Switch Rack (10 switches) with 10 Nos. Patch Panels
- ISO certified Branded Patch Panel: 4nos.
- Labeling of each network node and faceplate as directed
- Necessary Cleaning service & Shifting of Servers (3Nos.)
- Necessary Cleaning Service & Shifting of Switches (10Nos.)
- Cleaning of equipments as necessary before shifting.
- Dismantling of existing wired LAN .
- Create 100 Pcs. working Patch Cords from Dismantled Cable (Min. 6')
- Work in co-ordination with SDF IT personnel.